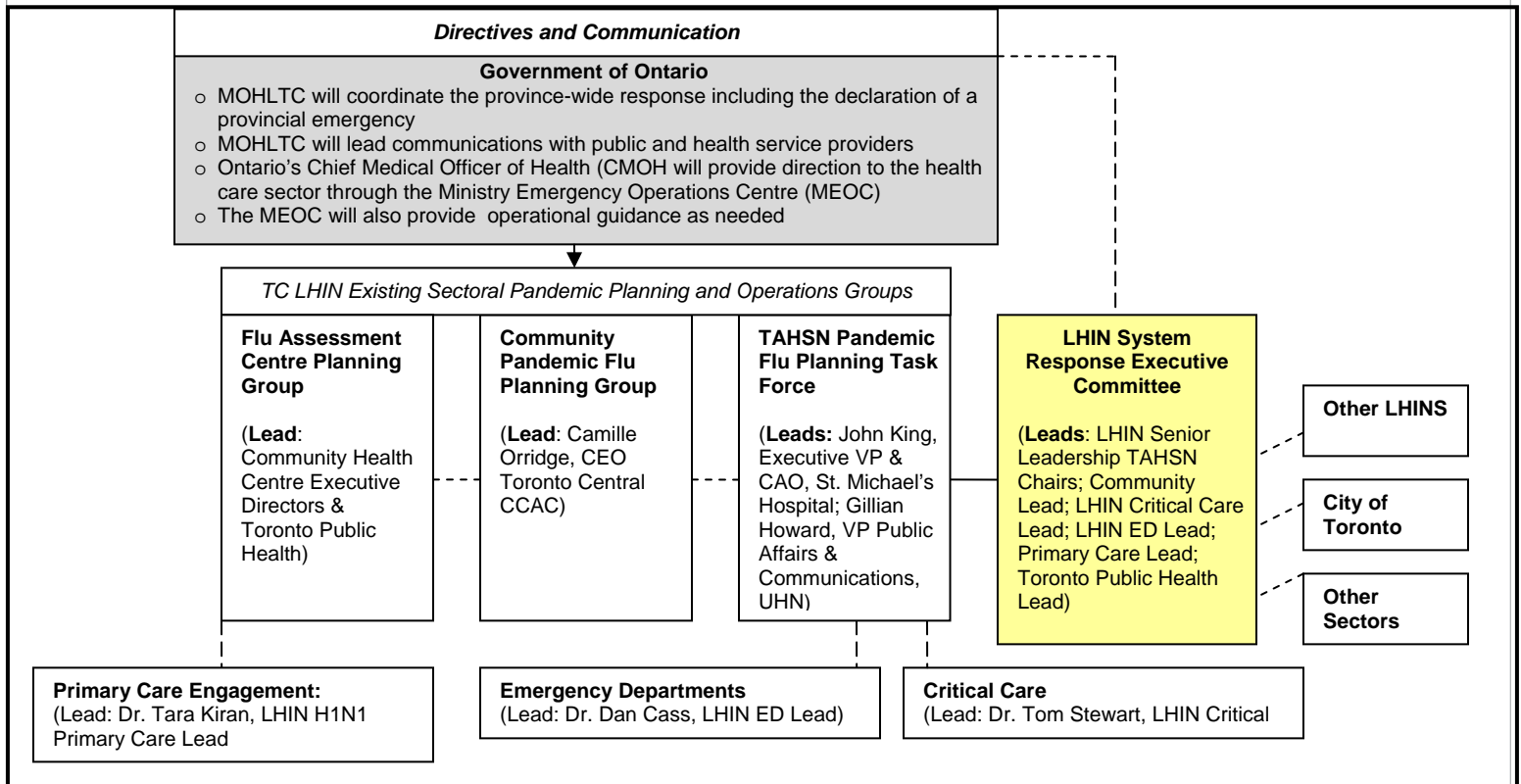


Updated (Oct 14, 2009) System Response Organizational Structure:



Existing Planning and Operations Groups : Roles and Responsibilities

Flu Assessment Centre Planning Group	<ul style="list-style-type: none"> The Flu Assessment Centre Planning Group is working with all LHIN Community Health Centres, Toronto Public Health, local hospitals and family health teams to develop local plans for Flu Assessment Centres (FAC) in 4 quadrants of the LHIN: Northeast; Northwest; Southeast and Southwest
Community Pandemic Flu Planning Group	<ul style="list-style-type: none"> The Community Pandemic Flu Planning Group is working with community and long-term care agencies to assess their readiness, to support planning and coordination within and among community and long-term care organizations, and to identify system issues within and between these sectors that need resolution The Community Pandemic Flu Planning Group is the first point of contact for the Toronto Central CCAC, CSS, mental health and addiction agencies, CHCs and LTC homes about questions and issues related to HINI planning and coordination
TAHSN Pandemic Flu Planning Task Force	<ul style="list-style-type: none"> TAHSN Pandemic Flu Planning Task Force has convened all acute care Toronto hospitals to develop common pandemic planning guidelines, coordinate communications and share expertise. The TAHSN Pandemic Planning Task Force is the first point of contact for LHIN hospitals with questions and issues related to HINI planning and coordination, with the following two exceptions: <ul style="list-style-type: none"> For Critical Care, hospitals will raise issues with the LHIN's Critical Care Lead and chair of the Inter-hospital Critical Care Surge Planning Task Force Hospital Emergency Departments will raise issues via the Toronto Emergency Network
LHIN System Response Executive Committee	<ul style="list-style-type: none"> The LHIN System Response Executive Committee will work to: <ul style="list-style-type: none"> Ensure communication channels and coordination mechanisms across the system in the Toronto Central LHIN are working well and that all organizations and agencies are receiving official pandemic communications from the MOHLTC Facilitate the resolution of system-level issues including escalation to the MOHLTC, the City of Toronto and other LHINs if required Each Lead for the sectoral planning and operational groups will bring forward system-level issues needing resolution to the Executive Committee